



VISION TO VIBRANT

2020 LEGISLATIVE AGENDA



**GREATER
FORT WAYNE INC.**
METRO CHAMBER ALLIANCE

VISION TO VIBRANT

BUILDING A NATIONALLY RECOGNIZED ECONOMY

Greater Fort Wayne Inc. works each day on behalf of more than 1,350 member businesses to build a nationally recognized economy. To accomplish this mission, we must grow jobs, grow wages, and grow population.

The decisions made at the council table, in the chambers of the Statehouse, and the halls of Congress have a direct impact on whether—and how—we achieve these goals. That is why we advocate for public policy that promotes business and economic growth, talent attraction and retention, and community vibrancy.

A SUCCESSFUL STRATEGY

As a community, we are:

- Investing in our future.
- Enhancing our quality of place by redeveloping distressed properties.
- Reinvigorating our neighborhoods.
- Creating conditions for new, high-wage job opportunities.

This strategy is proving to be successful, as demonstrated by a positive shift in our domestic migration over the last two years.

THE NEXT STEPS

Though we have made significant economic strides, the job is far from finished. To become a nationally recognized economy, we must become a magnet for talent, attracting and retaining people from across the country. We can accomplish this through innovative public policy and strong, collaborative partnerships between the private and public sectors.

We work with all levels of government and advocate year-round for public policy that helps grow our community into a nationally recognized economy. GFW Inc.'s legislative priorities focus on these five areas:

- Economic & Community Development
- Transportation & Infrastructure
- Entrepreneur & Business Development
- Education & Workforce Development
- Government Efficiency

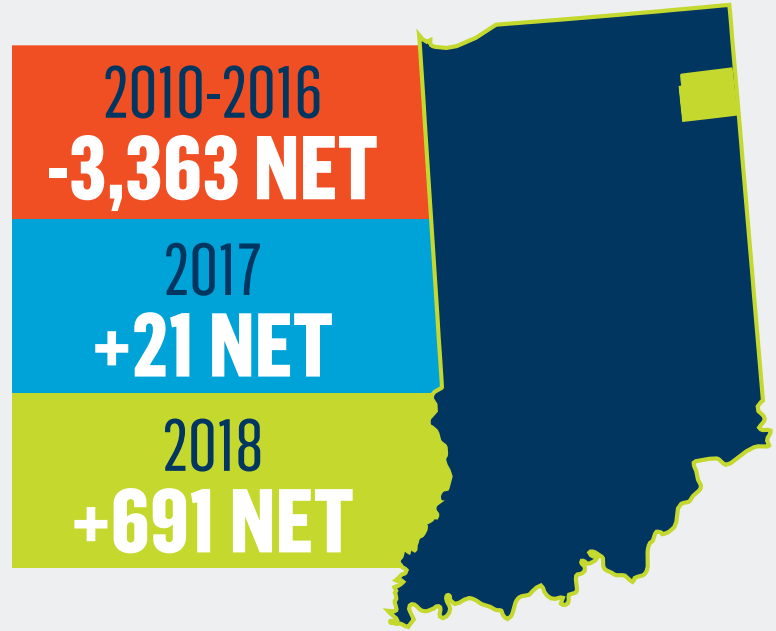
The 2020 Legislative Agenda presents GFW Inc.'s policy position statements as well as our key legislative priorities. This agenda unites and advocates with one voice on behalf of Allen County's business community, in pursuit of a nationally recognized economy.

TABLE OF CONTENTS

REVERSING THE TREND.....	3
2020 LEGISLATIVE PRIORITIES.....	5
ECONOMIC & COMMUNITY DEVELOPMENT.....	6
TRANSPORTATION & INFRASTRUCTURE.....	7
ENTREPRENEUR & BUSINESS DEVELOPMENT.....	8
EDUCATION & WORKFORCE DEVELOPMENT.....	9
GOVERNMENT EFFICIENCY.....	10
HOW A STATE BILL BECOMES A LAW.....	11
MAKE YOUR VOICE HEARD - CONTACT INFORMATION.....	14



REVERSING THE TREND ON DOMESTIC MIGRATION IN ALLEN COUNTY



From 2010-18, Indiana had a net domestic migration loss of 55,044 people.



THE LANDING
OPENING **SUMMER 2020**



Riverfront
FORT WAYNE

PHASE I COMPLETED **AUGUST 2019**
PHASE II & III GROUNDBREAKING **EARLY 2020**



BOUTIQUE HOTEL
GROUNDBREAKING **MAY 2019**
PROJECTED FINISH **FALL 2020**

2020 LEGISLATIVE PRIORITIES



LOCAL

- Support the advancement of quality-of-place projects such as Electric Works, phases II and III of Riverfront Development, North River development, Stellar Communities projects in east Allen County, and development of Arts Campus Fort Wayne to build best-in-class amenities that attract and retain talent and businesses
- Support efforts to update the city/county comprehensive plan and develop a countywide economic development strategy

STATE

- Support converting U.S. Route 30 to a limited-access highway to improve connectivity in northeast Indiana
- Maintain Indiana's economic competitiveness by preserving and strengthening economic development tools such as Tax Increment Financing (TIF) and the Redevelopment Tax Credit

FEDERAL

- Support the military presence in northeast Indiana, including maintaining a combat fighter mission for the 122nd Fighter Wing at the Fort Wayne Air National Guard Base
- Maintain and strengthen the federal programs for Historic Tax Credits and New Markets Tax Credits

ECONOMIC & COMMUNITY DEVELOPMENT

GFW Inc. is focused on attracting new businesses, helping existing businesses grow, and creating best-in-class amenities to attract and retain talent. We encourage creative uses of resources to improve quality of place, maintain infrastructure, and provide an environment for businesses to succeed.

- Support efforts to update the city/county comprehensive plan and develop a countywide economic development strategy
- Support art and cultural institutions, as they are part of our community identity, attracting and retaining talent, leveraging tourist dollars, and helping sustain a positive quality of life for our residents
- Support the advancement of quality-of-place projects such as Electric Works, phases II and III of Riverfront Development, North River development, Stellar Communities projects in east Allen County, and development of Arts Campus Fort Wayne to build best-in-class amenities that attract and retain talent and businesses
- Support local revenue-enhancement opportunities to give communities the tools to adequately fund capital improvement projects
- Rejuvenate neighborhoods by incentivizing investment in distressed properties, as vibrant neighborhoods are critical to our community's growth
- Support sustainable funding for Regional Development Authorities to encourage regionalism and promote the revitalization of distressed properties, enhancing quality of place
- Maintain Indiana's economic competitiveness by preserving and strengthening economic development tools such as Tax Increment Financing (TIF) and the Redevelopment Tax Credit
- Attract investment by aligning economic development programs and Opportunity Zones
- Support initiatives that increase available capital by attracting national investment and incentivizing the retention of homegrown capital within Indiana
- Maintain and strengthen the federal programs for Historic Tax Credits and New Markets Tax Credits

TRANSPORTATION & INFRASTRUCTURE

To grow our economy, Indiana must invest in infrastructure—such as airports, roads and highways, railways, public transportation, broadband, and trails—that fuels business growth. GFW Inc. supports transportation and infrastructure projects and policies that reflect the needs of our region and strengthen the ability to do business.

- Support converting U.S. Route 30 to a limited-access highway to improve connectivity in northeast Indiana
- Encourage the continued study of a passenger rail line that will run from Fort Wayne to Chicago
- Continue funding of the Public Mass Transit Fund to support the public transportation needs of workers and employers
- Support initiatives that increase accessibility to broadband, as access to broadband is critical for economic development
- Support the expansion of air service and air cargo in Fort Wayne—in a global economy, it is essential for Fort Wayne International Airport (FWA) to maintain and expand air service to business destinations
- Support FWA's terminal expansion project to increase capacity
- Support the military presence in northeast Indiana, including maintaining a combat fighter mission for the 122nd Fighter Wing at the Fort Wayne Air National Guard Base



ENTREPRENEUR & BUSINESS DEVELOPMENT

Entrepreneurs are the core drivers of new, emerging growth businesses. Their ingenuity is the basis for a growing economy in which businesses can become national industry leaders. GFW Inc. supports programs that promote entrepreneurship, accelerate the growth of innovative business, and enhance the development of early-stage industries.

- Address the shortage of Class-A office space and industrial sites
- Strengthen state and local resources for initiatives that promote innovation and entrepreneurship
- Maximize the ability of certified tech parks (such as the NIIC) to provide resources for entrepreneurs and startup companies
- Support initiatives to make Indiana a national destination for the development of autonomous vehicles, including leveraging our assets for testing facilities



EDUCATION & WORKFORCE DEVELOPMENT

Access to a diverse and talented workforce is critical to business growth. GFW Inc. supports education and workforce policies that prepare students to be college- or career-ready, provide advanced training for current employees, and promote collaboration among educational institutions and businesses.

- Advance policies that will prepare all students to be ready to succeed upon graduation from high school, including early exposure to career opportunities, access to career and technical education programs, and increased post-secondary degree attainment
- Align K-12 academic accountability standards with the needs of the community
- Support legislative initiatives to expand access to early-childhood education
- Support the ongoing efforts of higher-education institutions to provide high-quality education that matches the workforce needs of the community
- Support workforce initiatives such as MadeByMe that connect educators and businesses to highlight the opportunities of skilled-trades careers to students
- Support the Employing People with Disabilities Initiative which helps open pathways to employment by removing barriers for people with disabilities and introducing qualified applicants to ready-to-hire companies
- Support unique STEAM educational opportunities, like STARBASE, to allow students to connect classroom education to real-world applications
- Encourage initiatives that support the availability of additional workforce housing throughout the region
- Support workforce-development initiatives that provide training and education that aligns with the needs of employers including Skill-Link and On-the-Job training programs
- Continue the Next Level Jobs Employer Training Grant that reimburses employers who train, hire, and retain new or current employees, and review wage requirements that would preclude businesses from qualifying for the grant
- Oppose policies that would impede Indiana's ability to attract and retain diverse talent
- Make Indiana the state of choice for retiring military veterans

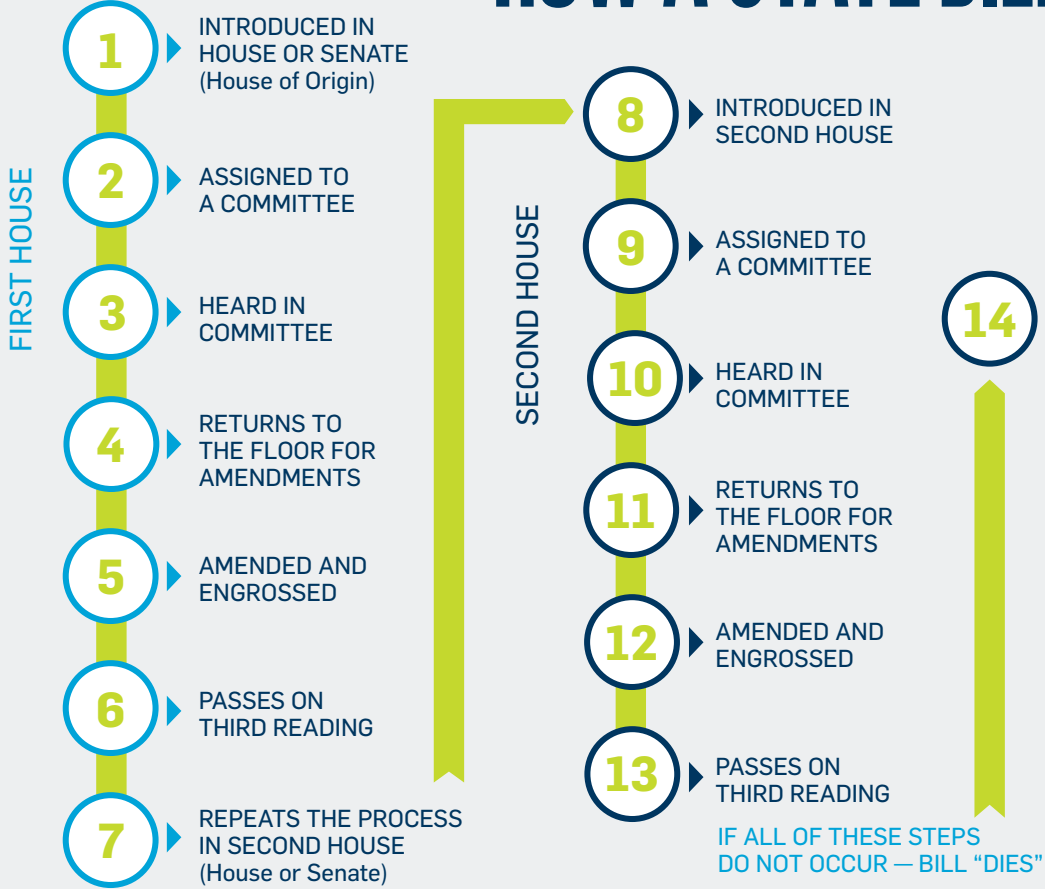
GOVERNMENT EFFICIENCY



Government can create a premier business environment by minimizing unnecessary regulations and providing efficient, high-quality services. GFW Inc. will continue to collaborate with our government officials at all levels to move our community forward.

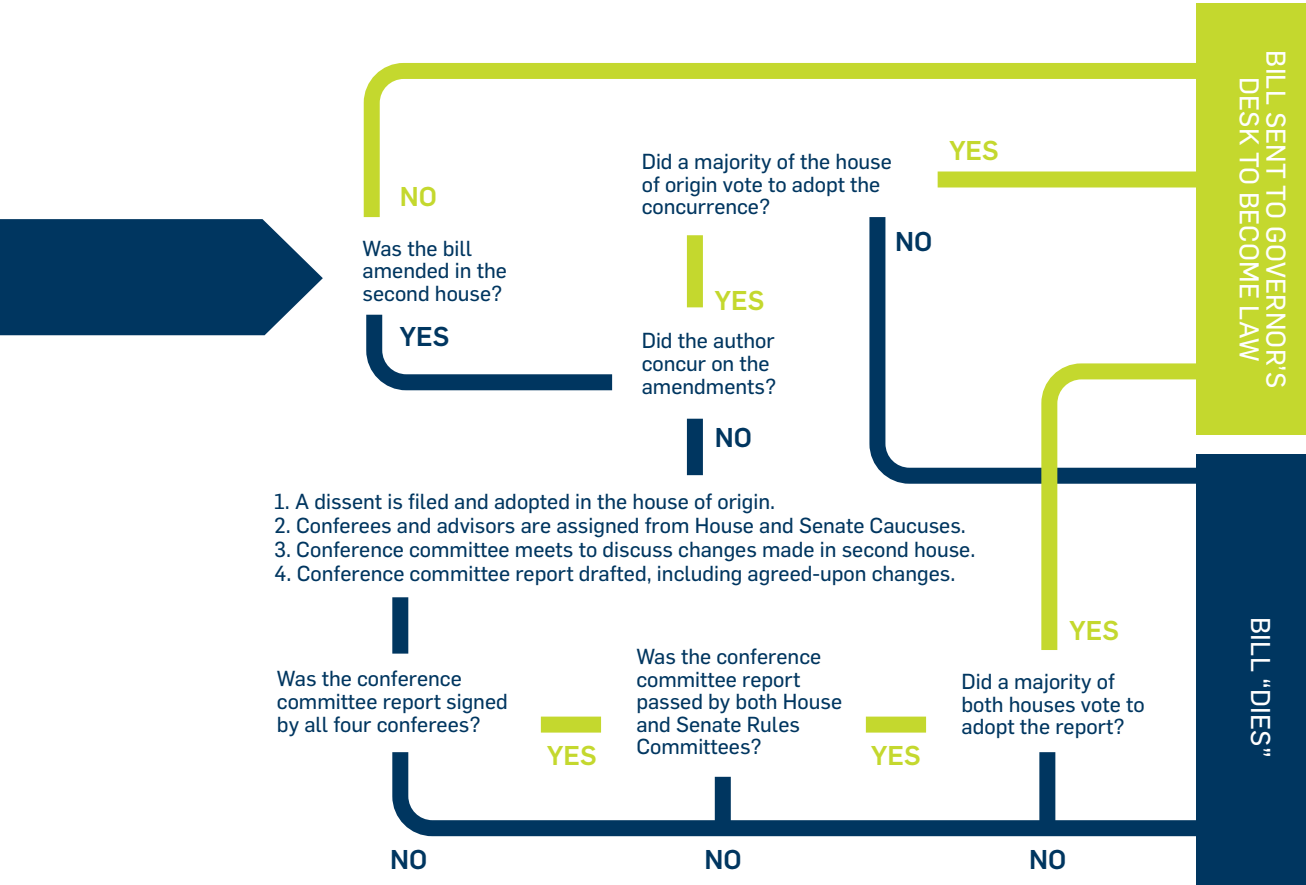
- Support the continued effort for more efficient and effective local permitting procedures
- Encourage efforts to diversify key revenue sources financing local government
- Support legislation to expand voluntary efficiencies for local government units
- Oppose overreaching administrative rule-making that unduly burdens small businesses
- Address the increasing cost of health care benefits for employers
- Support the permanent repeal of the federal medical device excise tax

HOW A STATE BILL BECOMES LAW



IF BILL COMPLETES PROCESS IN SECOND HOUSE, PROCEED TO CONFERENCE COMMITTEE FLOWCHART

CONFERENCE COMMITTEE FLOWCHART



1. A dissent is filed and adopted in the house of origin.
2. Conferees and advisors are assigned from House and Senate Caucuses.
3. Conference committee meets to discuss changes made in second house.
4. Conference committee report drafted, including agreed-upon changes.

HOW A CITY COUNCIL BILL BECOMES A LAW

Ordinances and resolutions are formally introduced with First Reading on the second and fourth Tuesdays of each month during City Council's Regular Sessions; those bills move into committees for further discussion.

A bill that has been introduced is given its Second Reading during the Council's committee meeting the following week, where it is discussed and given one of the following preliminary actions:

- Do Pass / Do Not Pass
- No Recommendation
- Held or Tabled

A bill with a "Do Pass," "Do Not Pass," or "No Recommendation" action moves to Regular Session either that Tuesday, the following Tuesday, or as designated, where it receives its Third Reading and is given Final Action.

Bills that have been given Final Action by City Council will either go to the Mayor for signature, or "die."

A vetoed bill must receive at least six votes by City Council to be overridden.

A "Held or Tabled" bill returns for Committee Session discussion when specified by Council.

Allen County Commissioners
260 449-7555
Citizens Square, Suite 410
200 East Berry Street
Fort Wayne, IN 46802
commissioner@co.allen.in.us

Rich Beck – 3rd District
rich.beck@co.allen.in.us

Therese Brown – 2nd District
therese.brown@co.allen.in.us

Nelson Peters – 1st District
nelson.peters@co.allen.in.us

Allen County Council
260 449-7233
Rousseau Centre, Suite 102
1 East Main Street
Fort Wayne, IN 46802

Robert Armstrong – At-Large
bob.armstrong@allencounty.us

Joel Benz – 3rd District
joel.benz@allencounty.us

Larry Brown – 4th District
l.brown@advmechanical.com

Sheila Curry-Campbell – 1st District
TBD

Ken Fries – At-Large
kenneth.fries@allencounty.us

Tom Harris – 2nd District
tom.harris@allencounty.us

Kyle Kerley – At-Large
kyle.kerley@allencounty.us

LOCAL CONTACTS

City of Fort Wayne Mayor
260 427-1111
Citizens Square, Suite 420
200 East Berry Street
Fort Wayne, IN 46802
mayor@cityoffortwayne.org

Tom Henry
mayor@cityoffortwayne.org

City Council
citycouncil@cityoffortwayne.org

Jason Arp – 4th District
jasonarpcitycouncil@gmail.com

Michelle Chambers – At-Large
michellechambers4council@gmail.com

Tom Didier – 3rd District
tdidiers5@frontier.com

Paul Ensley – 1st District
paul@paulensley.com

Tom Freistroffer – At-Large
freistrofferatlarge@gmail.com

Glynn Hines – At-Large
glynnhines@aol.com

Russ Jehl – 2nd District
russ@russjehl.com

Geoff Paddock – 5th District
geoffreypaddock@aol.com

Sharon Tucker – 6th District
electsharontucker@gmail.com

STATE CONTACTS

Senator Liz Brown
District 15, Fort Wayne
Senator.Brown@iga.in.gov

Senator Justin Busch
District 16, Fort Wayne
Senator.Busch@iga.in.gov

Senator Sue Glick
District 13, LaGrange
Senator.Glick@iga.in.gov

Senator Travis Holdman
District 19, Markle
Senator.Holdman@iga.in.gov

Senator Dennis Kruse
District 14, Auburn
Senator.Kruse@iga.in.gov

Senator Andy Zay
District 17, Huntington
Senator.Zay@iga.in.gov

Representative David Abbott
District 82, Rome City
h82@iga.in.gov

Representative Martin Carbaugh
District 81, Fort Wayne
h81@iga.in.gov

Representative Phil GiaQuinta
District 80, Fort Wayne
h80@iga.in.gov

Representative Dave Heine
District 85, New Haven
h85@iga.in.gov

Representative Christopher Judy
District 83, Fort Wayne
h83@iga.in.gov

Representative Matt Lehman
District 79, Berne
h79@iga.in.gov

Representative Dan Leonard
District 50, Huntington
h50@iga.in.gov

Representative Bob Morris
District 84, Fort Wayne
h84@iga.in.gov

Representative Ben Smaltz
District 52, Auburn
h52@iga.in.gov

Representative David Wolkins
District 18, Winona Lake
h18@iga.in.gov

Representative Dr. Dennis Zent
District 51, Angola
h51@iga.in.gov

FEDERAL CONTACTS

Senator Mike Braun
260 427-2164
203 East Berry Street
Suite 702B
Fort Wayne, IN 46802

Senator Todd Young
1300 South Harrison Street
Suite 3161
Fort Wayne, IN 46802

Representative Jim Banks
3rd District
260 702-4750
1300 South Harrison Street
Fort Wayne, IN 46802

To find out who your elected officials are at the local, state, and federal level, visit:
www.in.gov/sos/elections



**GREATER
FORT WAYNE INC**

METRO CHAMBER ALLIANCE

200 E. Main Street, Suite 800
Fort Wayne, IN 46802

260 420-6945
advocacy@greaterfortwayneinc.com
greaterfortwayneinc.com

Greater Fort Wayne Inc. is a nonprofit membership organization serving the business community in Fort Wayne and Allen County, Indiana. Policies and positions expressed in this document do not represent those of any elected officials or government entities, and do not represent endorsement, recommendation or favoring by any such officials or entities.